

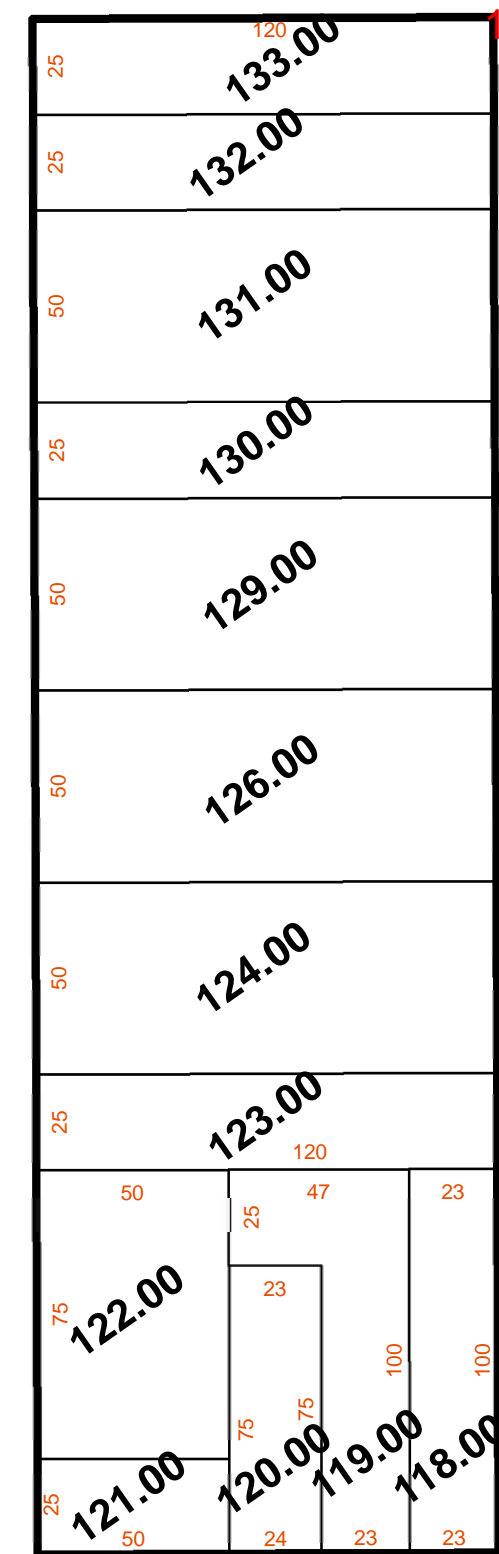
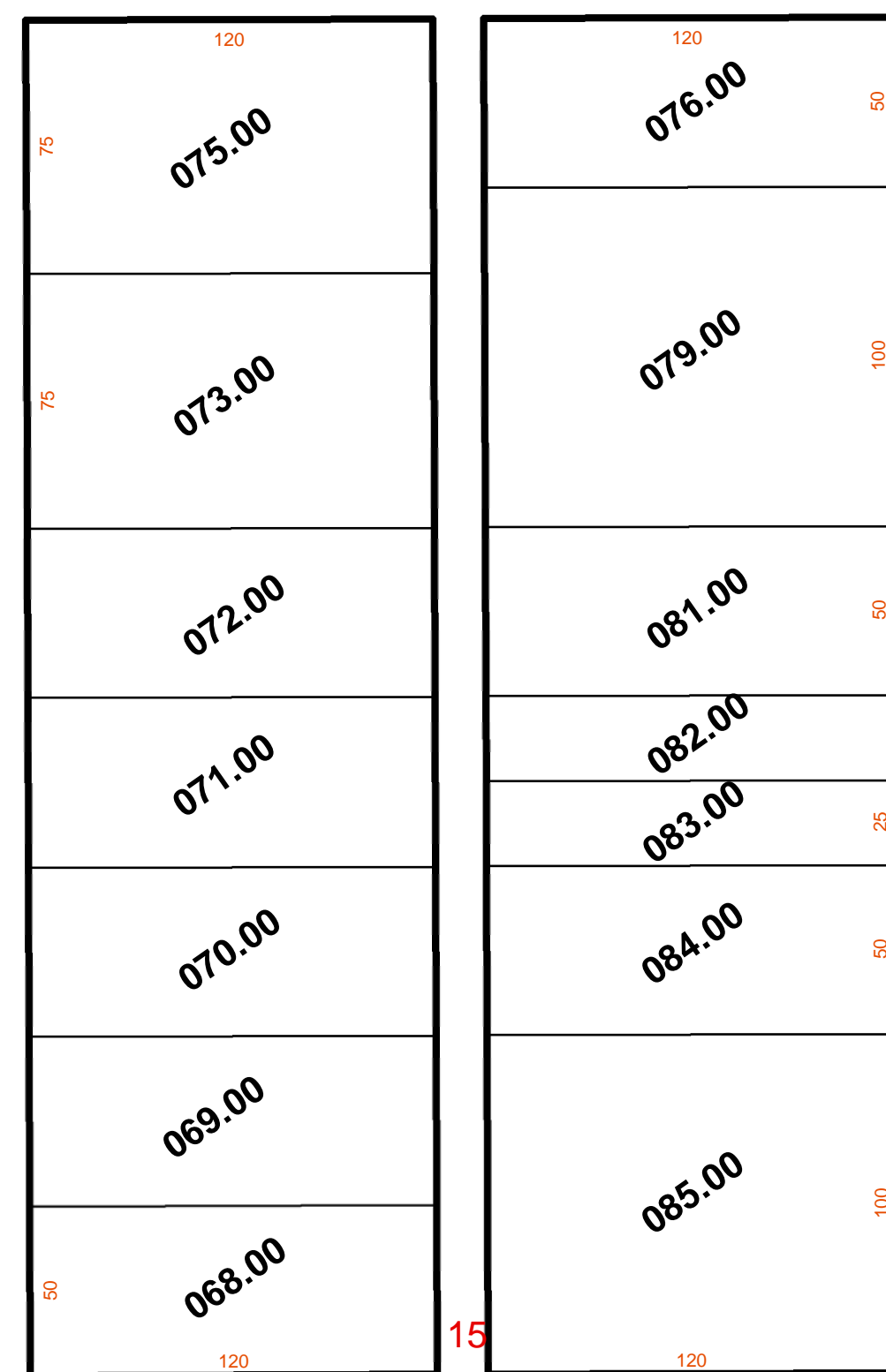
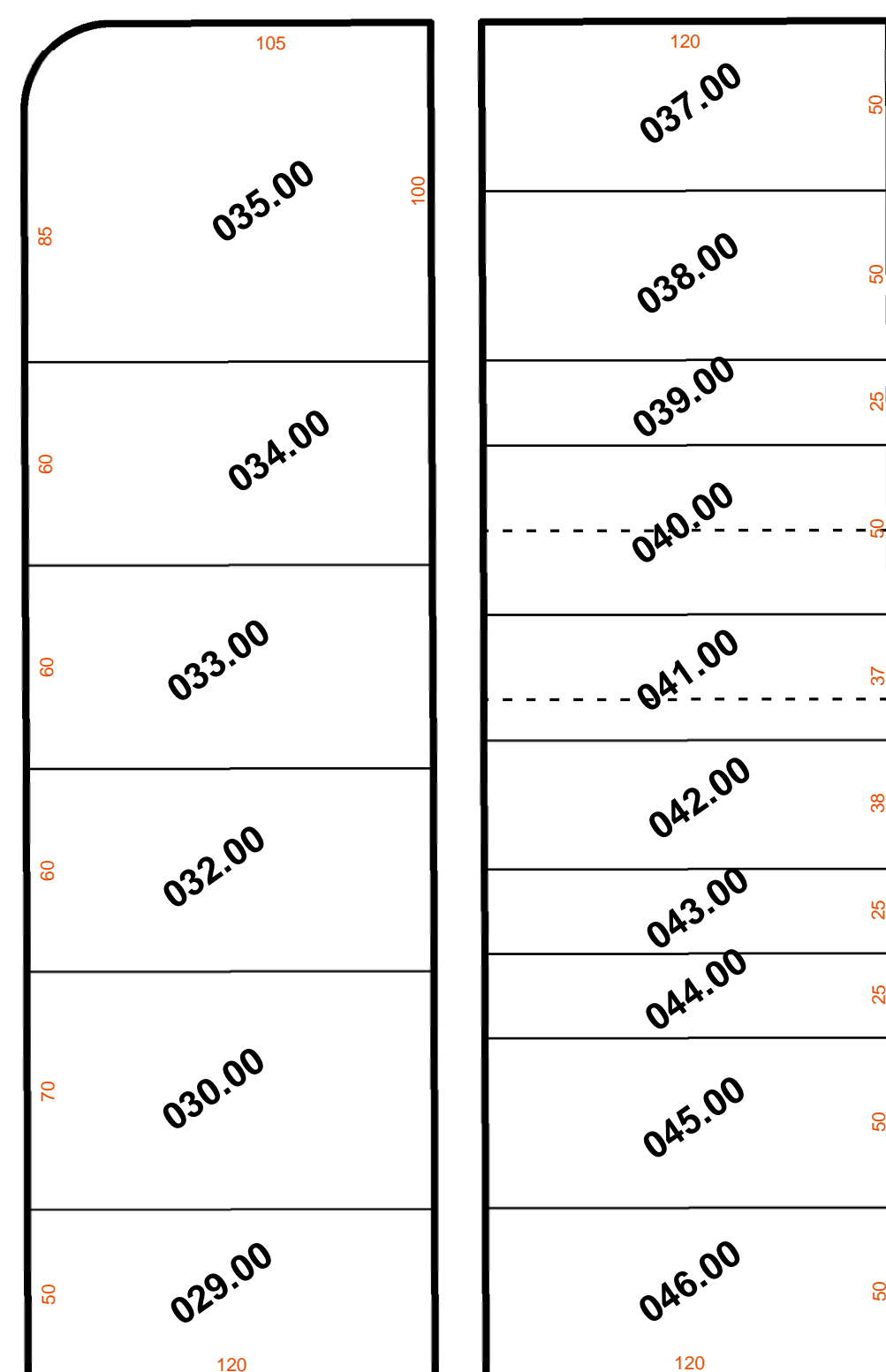
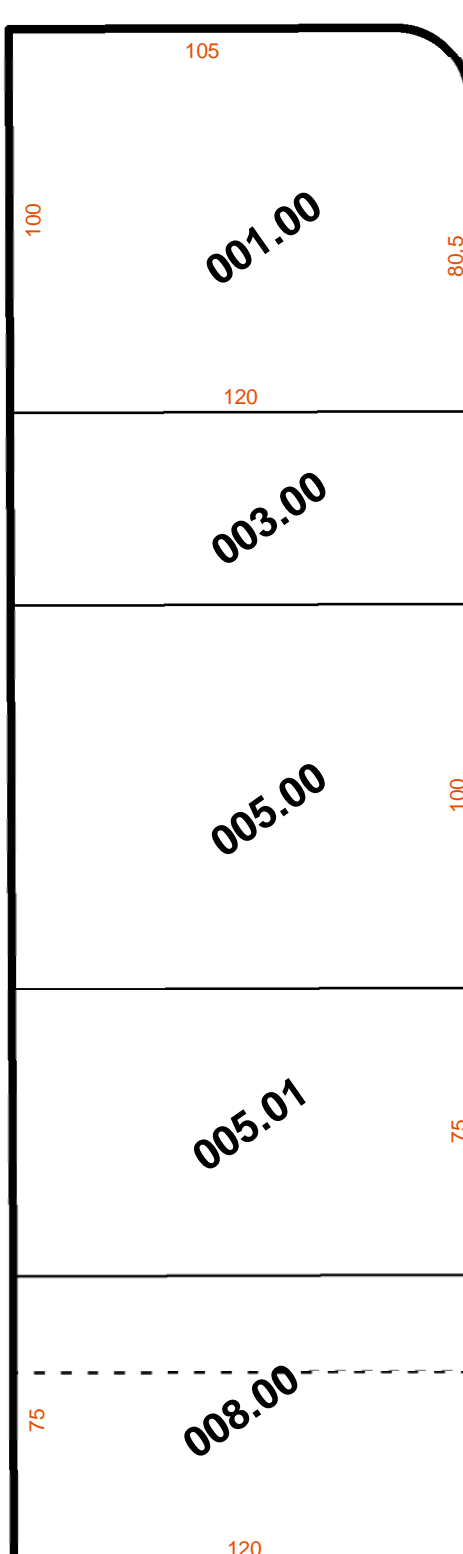
MAP 01.11-22..

MAP 01.07-04..

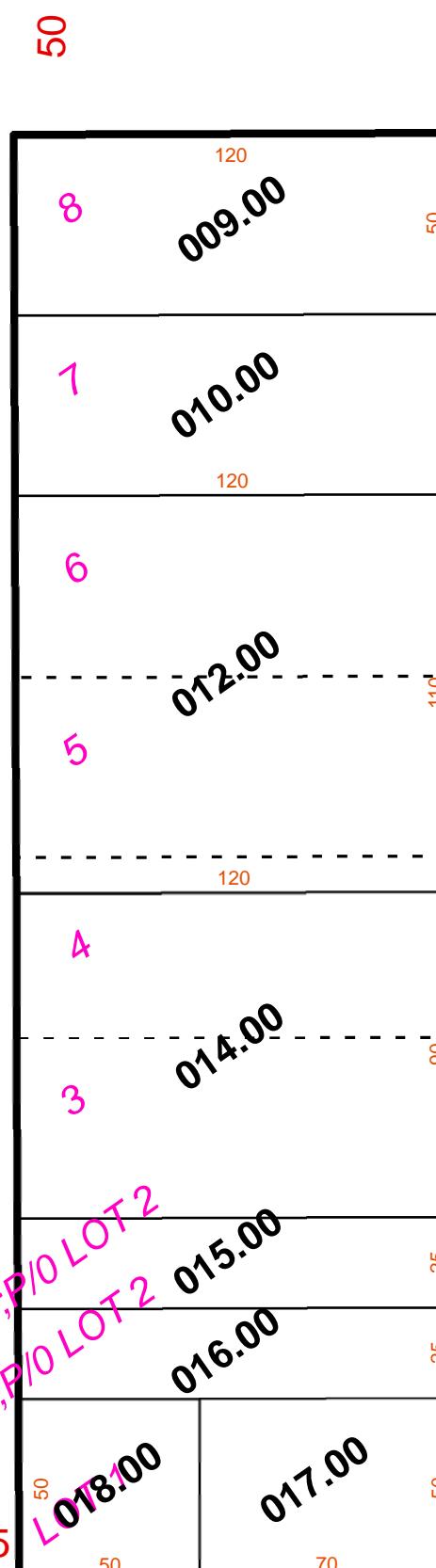
1ST ST

50

MAP 01.11-16..



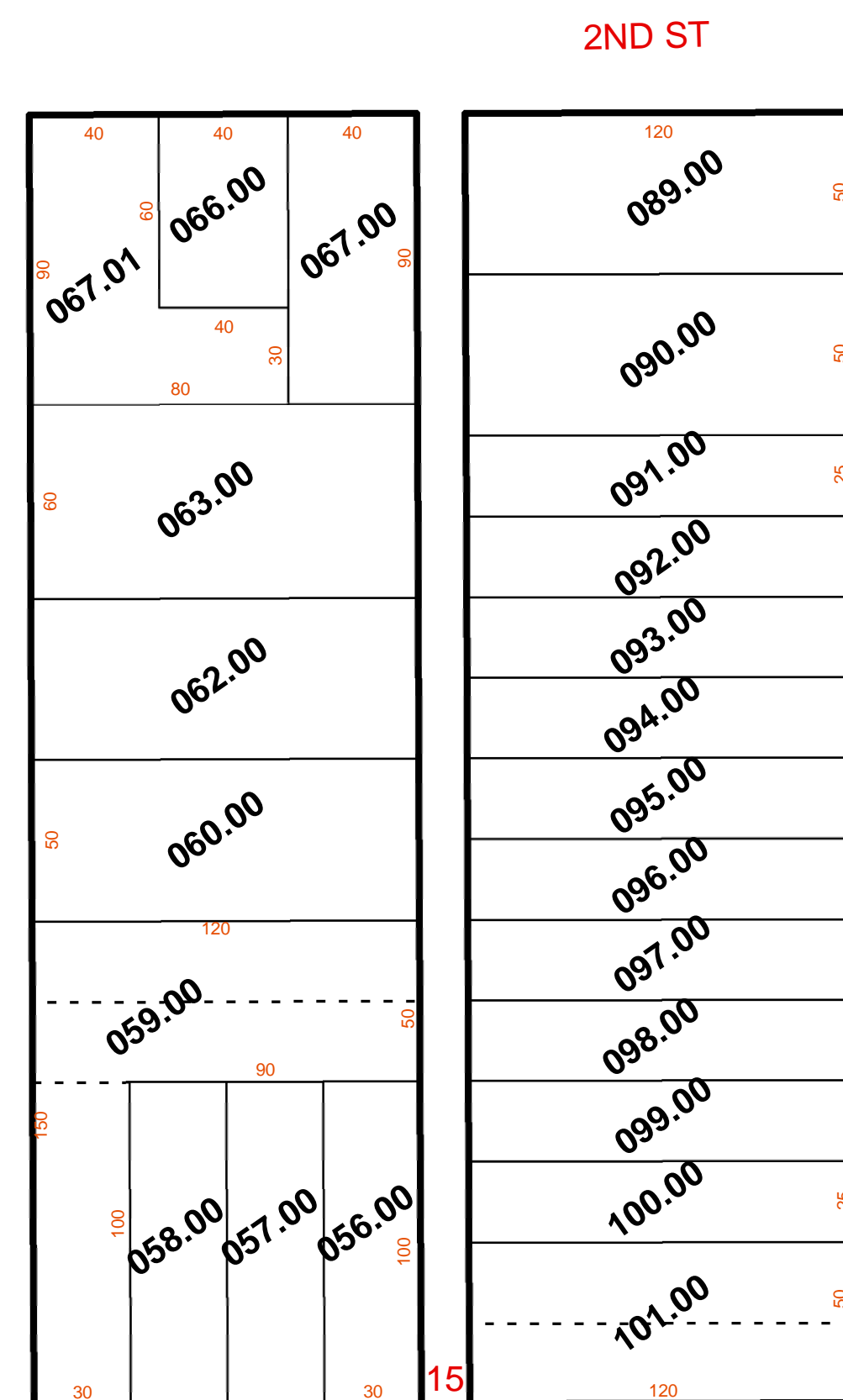
MAP 01.07-03..



21ST AVE

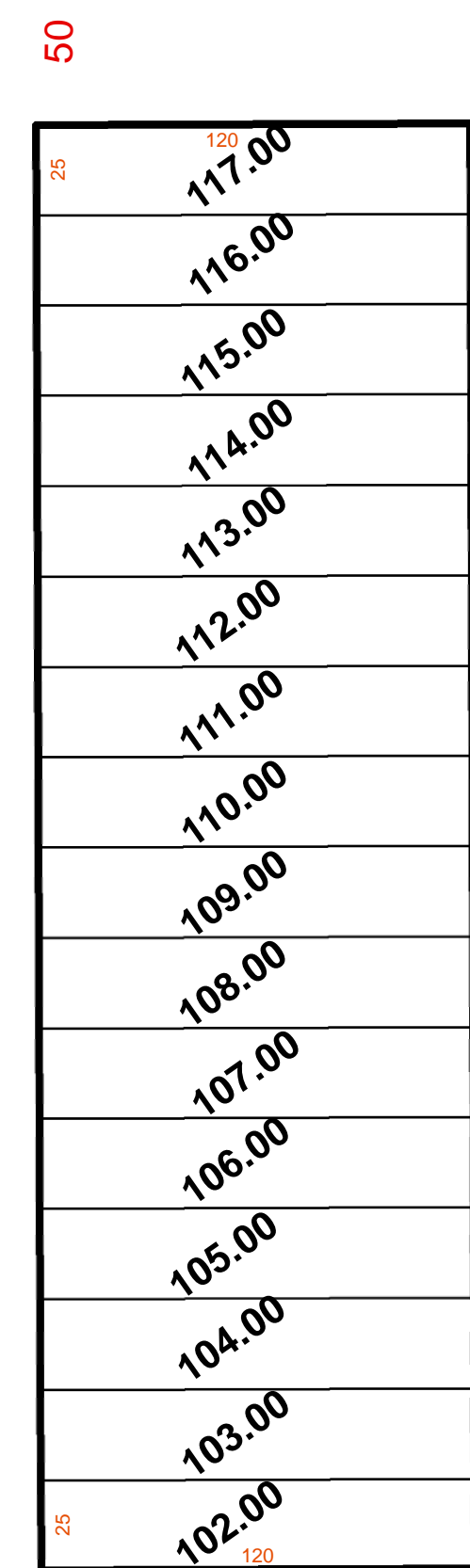


PINE AVE



2ND ST

MAPLE AVE



MAP 01.11-15..

MAP 01.11-20..

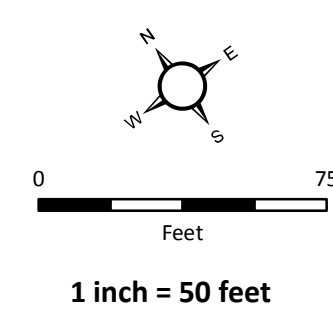
ASSESSMENT MAP

County of Blair Pennsylvania

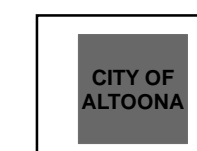
Date Published: 7/2/2019

The County makes no guarantee or warranty to its accuracy as to labeling, dimensions, placement or location of any features contained herein. The boundaries depicted by this data are approximate, and are not necessarily accurate to surveying or engineering standards. This data is intended for informational purposes and should not be considered authoritative for engineering, navigational, legal and other site-specific uses.

Presented by: Blair County Assessment Office 423 Allegheny St, Suite 041 Hollidaysburg, PA 16648 Prepared by: Blair County GIS Department 423 Allegheny St, Suite 011 Hollidaysburg, PA 16648



- Road ROW
- Parcel Boundary
- Lot Lines
- Ward Boundary
- Municipal Boundary
- Sheet Parcels



REVISIONS

NO.	DATE	DESCRIPTION

CITY OF ALTOONA District: 01.11 Map #: 21 (01.11-21..)