



Pennsylvania
Department of Health

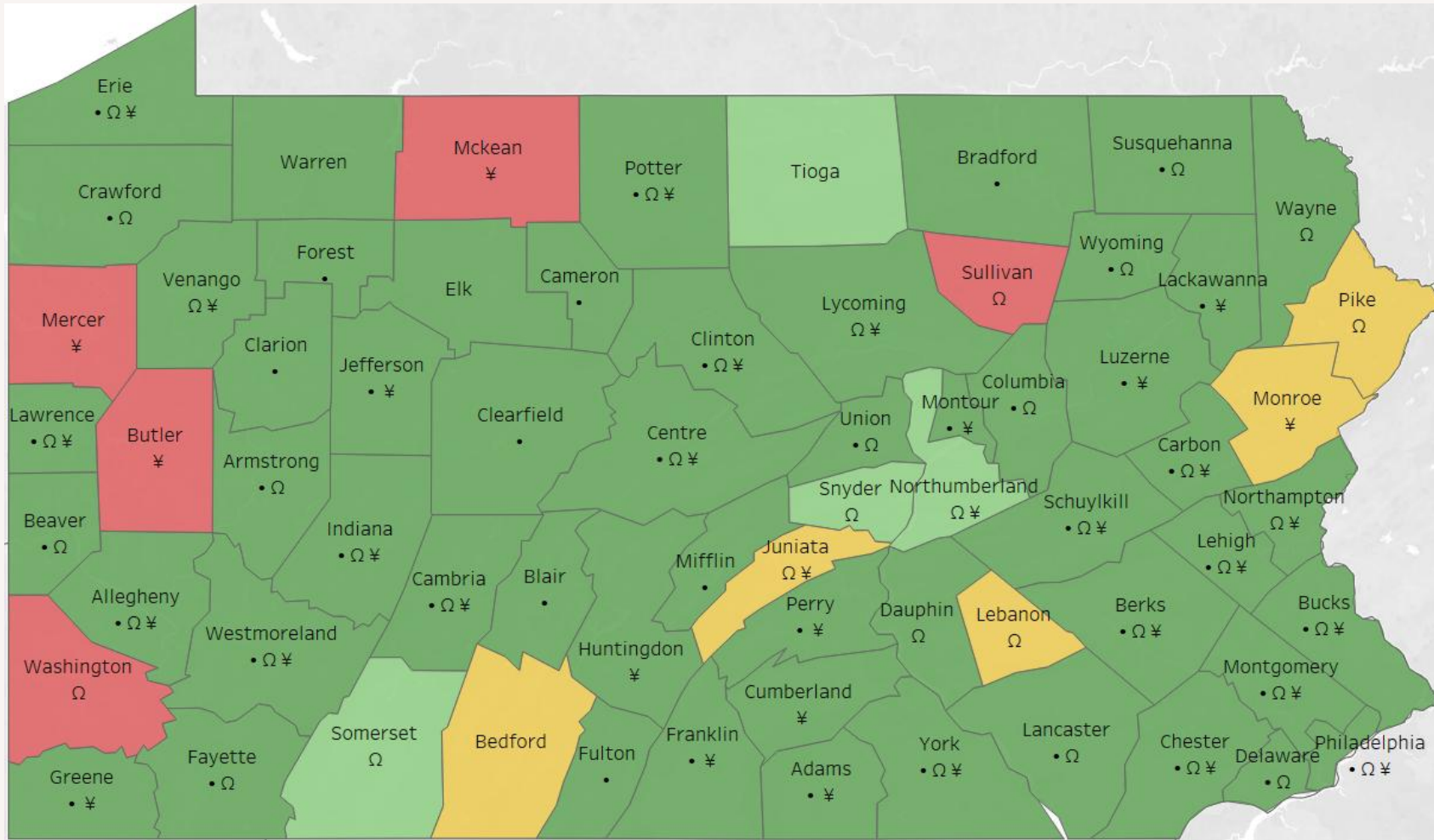
OCTOBER 2025

Coroner and Medical Examiner Onboarding and Drug Overdose Surveillance Monthly Report

Office of Drug Surveillance and Misuse Prevention

PARTICIPATION STATUS

Coroner Onboarding Status as of October 2025



Overdose Death Reporting Status

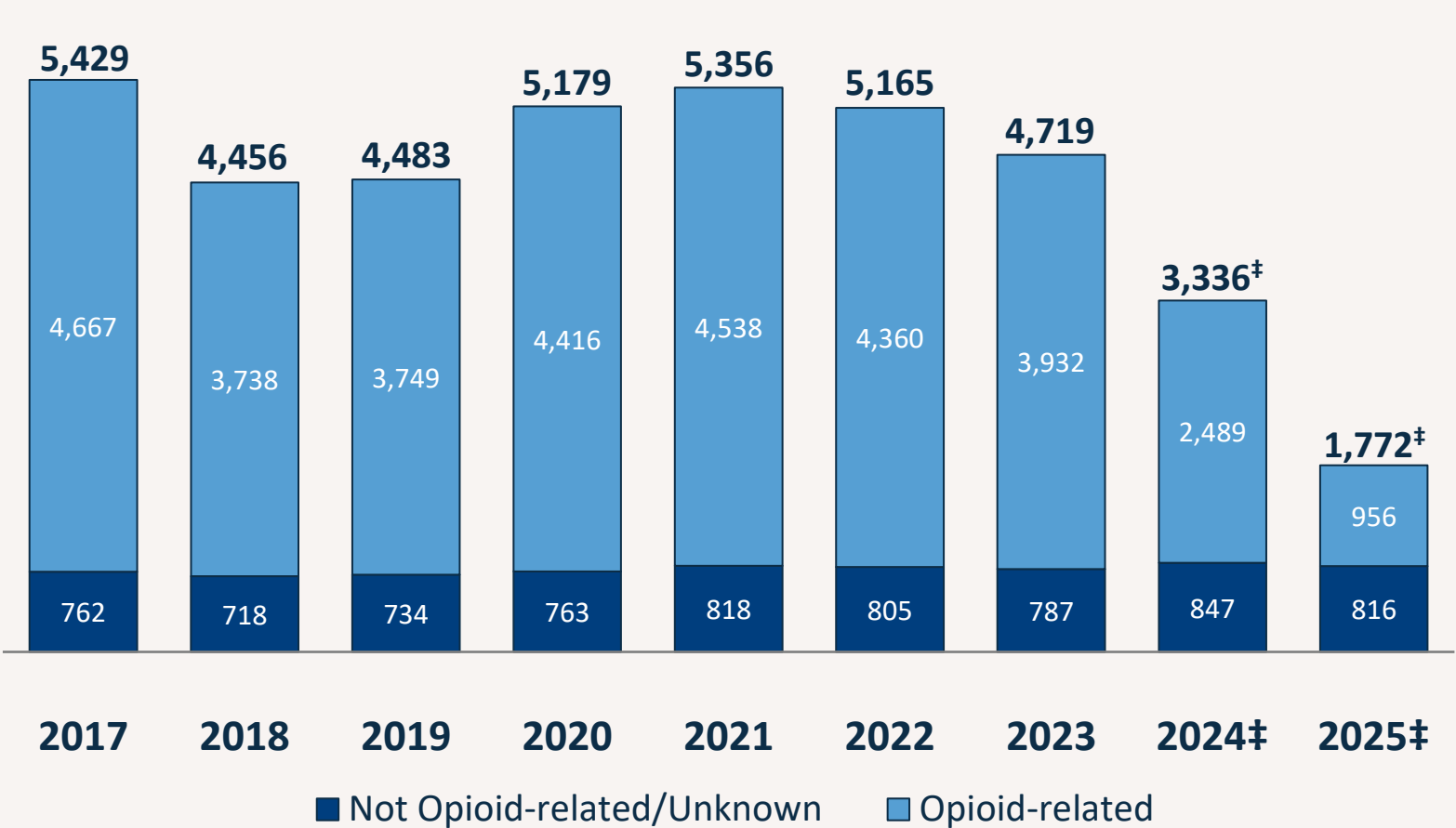
- On-Board (53)
- Intermittent Participation (4)
- In Discussion (5)
- Declined (5)

Additional DOH Program Participation Status

- Participating with Violent Death (44)
- Ω Participating with Child Death Review (41)
- ¥ Participating with Maternal Mortality Review Committee (37)



Estimated Unintentional & Undetermined Drug Overdose Deaths, 2017-2025‡



2024 preliminary Any Drug* estimates currently show a 29% decrease compared to 2023 counts.

2024 preliminary Any Opioid** estimates currently show a 37% decrease compared to 2023 counts.

*Any Drug overdoses include overdoses from any illicit, prescription or over-the-counter drugs, excluding alcohol-only related overdoses.

**Any Opioid overdoses include overdoses from illicit, prescription or over-the-counter opioids.

‡ Note for preliminary 2025 data, as ODSMP receives additional toxicology reports, Not Opioid-related/Unknown counts will change.

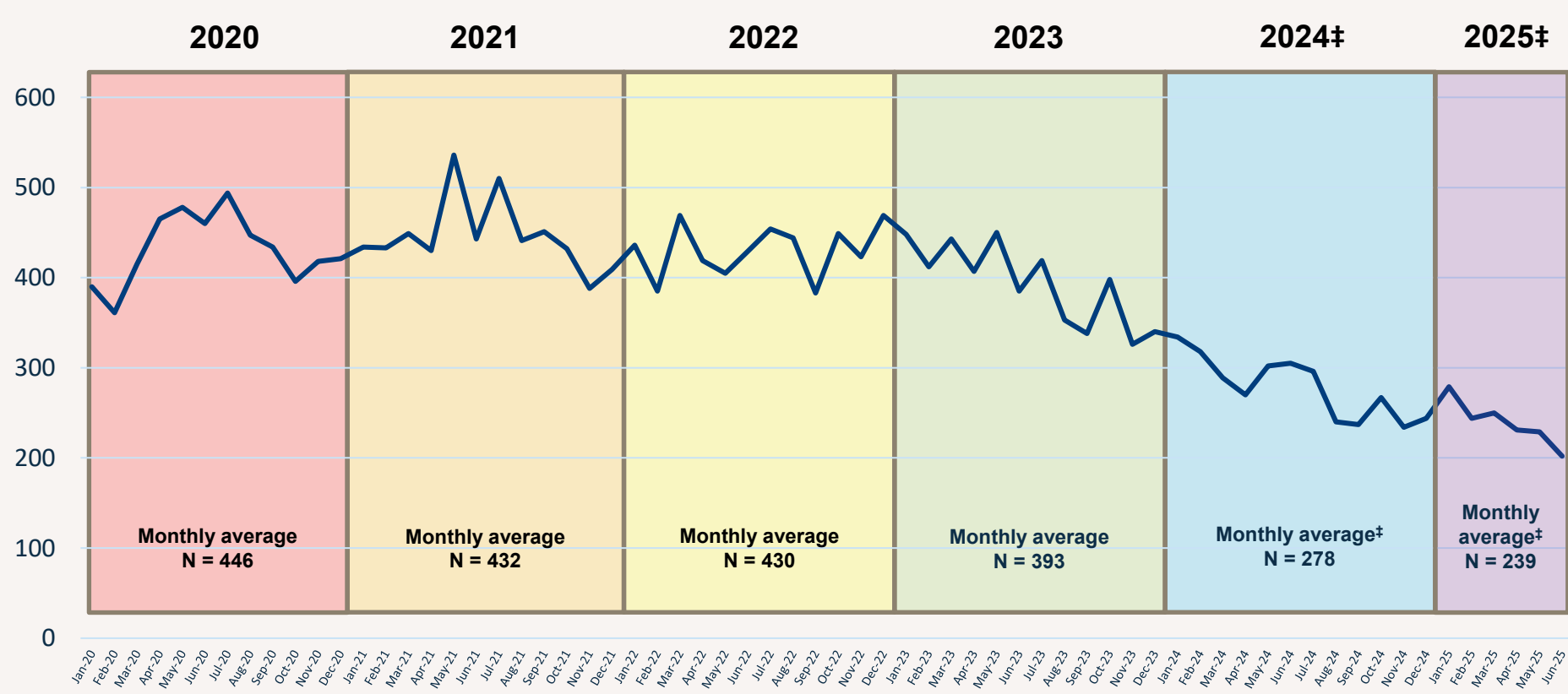
‡2024/2025 death data is preliminary, based on death record data as of October 2025. Please note that death records for overdose deaths are often delayed by 3-6 months and counts may change. Counts do not include suicides or homicides where someone intended to harm another person by poisoning.

‡ As of October 2025, ~2% of 2024 overdose deaths and ~23% of 2025 overdose deaths are missing drug specificity. Previous years are missing ≤5%.



FATAL DRUG OVERDOSE DATA

Estimated Any Drug* Overdose Deaths By Month, 2020-2025‡



2024 Any Drug* overdose death estimates currently show decreases from January through April 2024, with slight increases in May – July, when nonfatal overdoses typically show increased rates. Please note that 2025 death data is very preliminary and will likely increase.

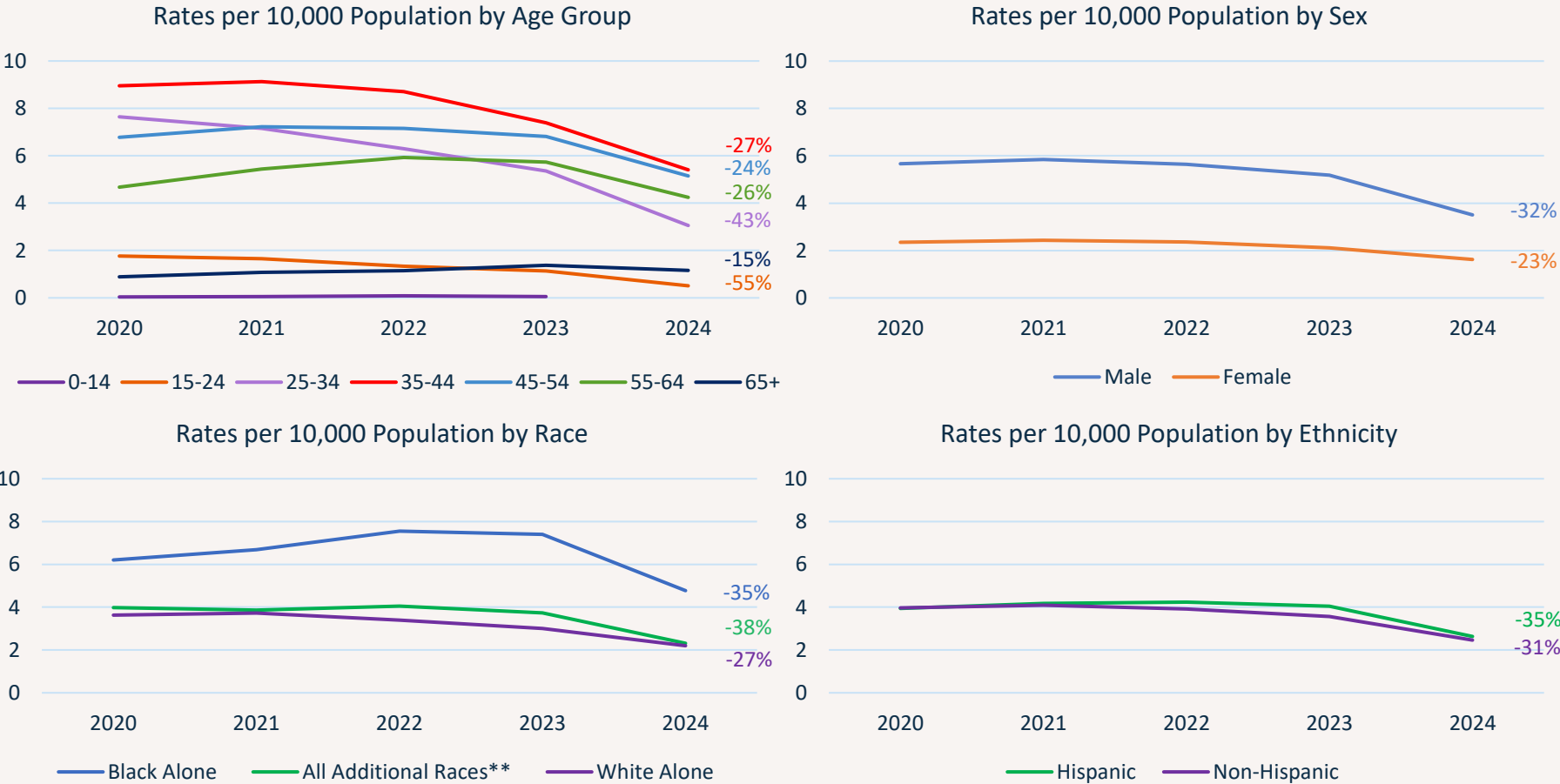
‡2024/2025 death data is preliminary, based on death record data as of October 2025. Please note that death records for overdose deaths are often delayed by 3-6 months and counts may change. Counts do not include suicides or homicides where someone intended to harm another person by poisoning.

*Any Drug overdoses include overdoses from illicit, prescription or over-the-counter drugs, excluding alcohol-only related overdoses.



FATAL DRUG OVERDOSE DATA

Estimated Any Drug* Overdose Deaths By Demographics, 2017-2024‡



Preliminary 2024‡ rates, as well as percent changes compared to 2023, have been added. All demographic categories have shown a decrease in preliminary 2024‡ rates compared to the previous year.

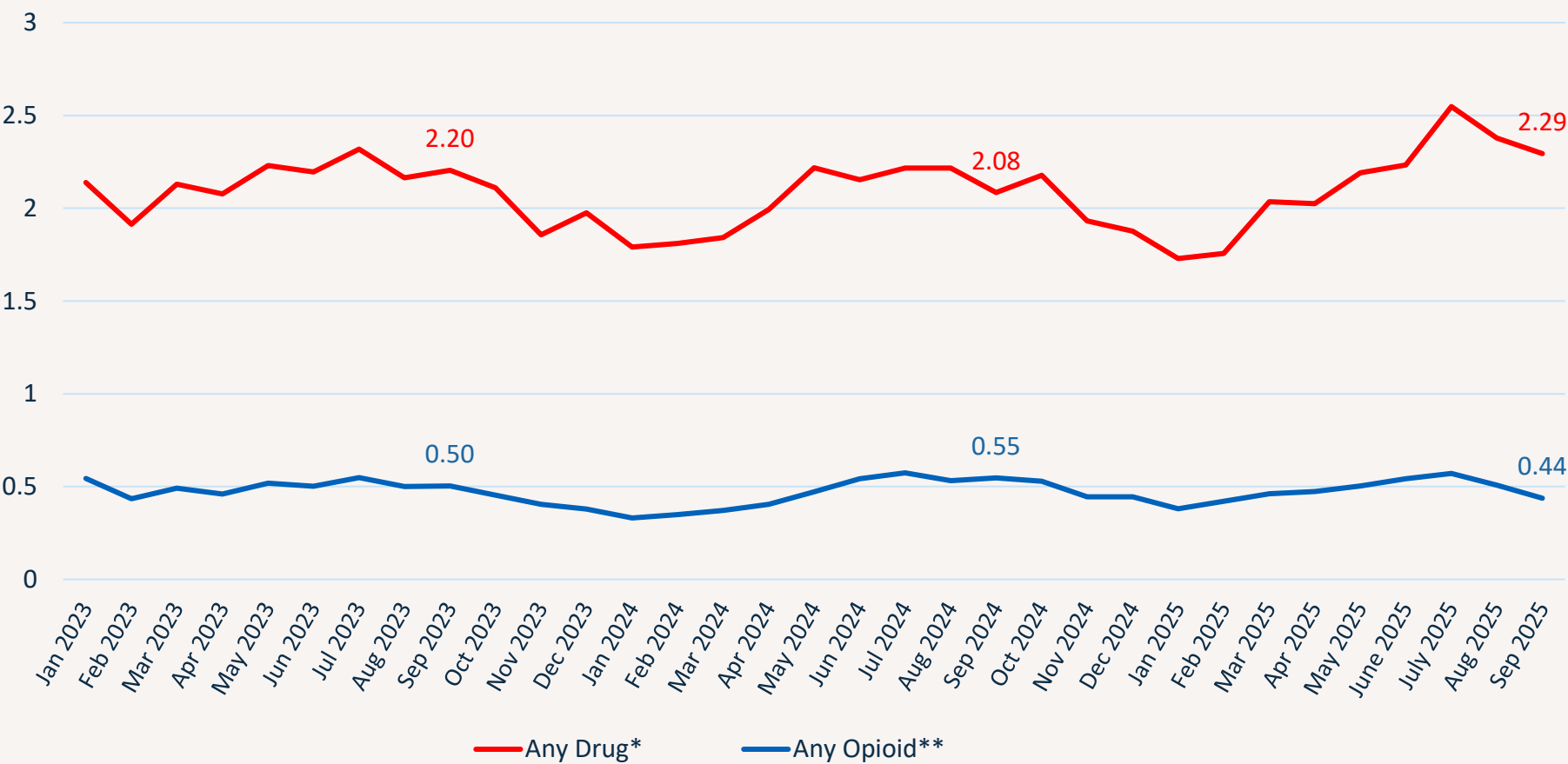
*Any Drug overdoses include overdoses from illicit, prescription or over-the-counter drugs, excluding alcohol-only related overdoses.

‡2024/2025 death data is preliminary, based on death record data as of October 2025. Please note that death records for overdose deaths are often delayed by 3-6 months and counts may change. Counts between 1 and 5 are suppressed. Counts do not include suicides or homicides where someone intended to harm another person by poisoning.
**Includes persons who identify as Asian, Native Hawaiian/Pacific Islander, American Indian/Alaska Native, or Other Race



NONFATAL DRUG OVERDOSE DATA

Rates of Overdose-Related Emergency Department (ED) Visits per 10,000 Population By Month, 2023-2025



2023-2024 overdose-related ED visits followed seasonal trends typically seen in Pennsylvania. However, the rate of Any Drug* overdose-related ED visits in September 2025 is higher than the rates in September 2023 or September 2024, while the rate of Any Opioid** overdose-related ED visits in September 2025 is lower than the rates in September 2023 or September 2024.

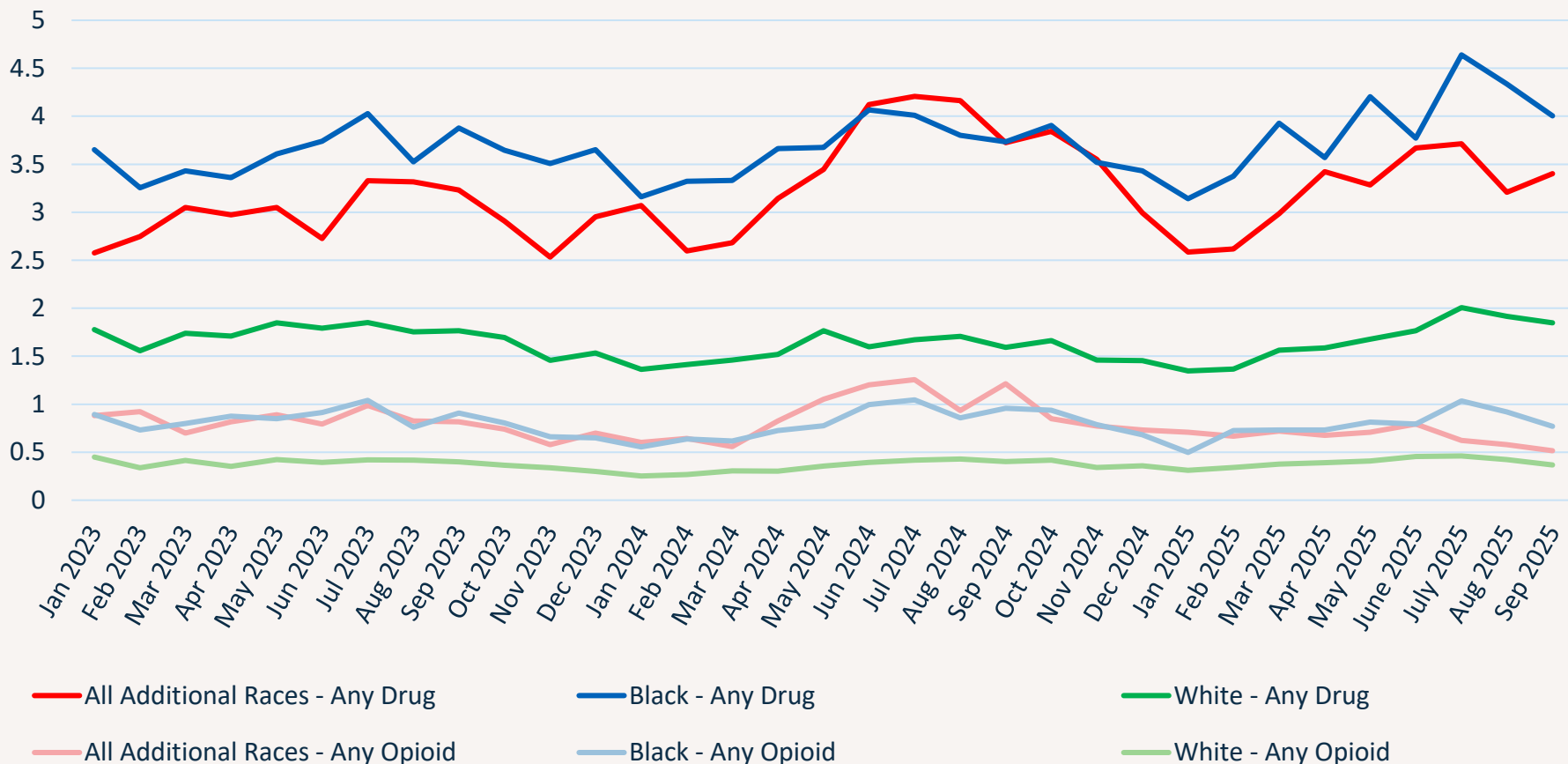
- While fatal overdoses appear to be decreasing in 2024, trends in nonfatal overdoses among Pennsylvania residents were comparable to those seen in 2023. In 2024, there was a
- 4.0% decrease in rates of Any Drug* overdose-related ED visits compared to 2023.
 - 3.4% decrease in rates of Any Opioid** overdose-related ED visits compared to 2023.



*Any Drug overdoses include overdoses from illicit, prescription or over-the-counter drugs.
**Any Opioid overdoses include overdoses from illicit, prescription or over-the-counter opioids.

NONFATAL DRUG OVERDOSE DATA

Rates of Any Drug* and Any Opioid** Overdose-Related ED Visits per 10,000 Population By Month and Race, 2023-2025



Overdose-related emergency department visits show varying trends across racial groups.

In 2024, for Any Drug* overdose-related ED visits there was a

- 17.4% increase among people of All Additional Races compared to 2023.
- 0.8% increase among Black individuals compared to 2023.
- 8.9% decrease among white individuals compared to 2023.

In 2024, for Any Opioid** overdose-related ED visits there was a

- 10.2% increase among people of All Additional Races compared to 2023.
- 3.2% decrease among Black individuals compared to 2023.
- 7.9% decrease among white individuals compared to 2023.

All Additional Races category includes persons who identify as Asian, Native Hawaiian/Pacific Islander, American Indian/Alaska Native, or Other Race

*Any Drug overdoses include overdoses from illicit, prescription or over-the-counter drugs.

**Any Opioid overdoses include overdoses from illicit, prescription or over-the-counter opioids.



Emerging Drug Trends[†]

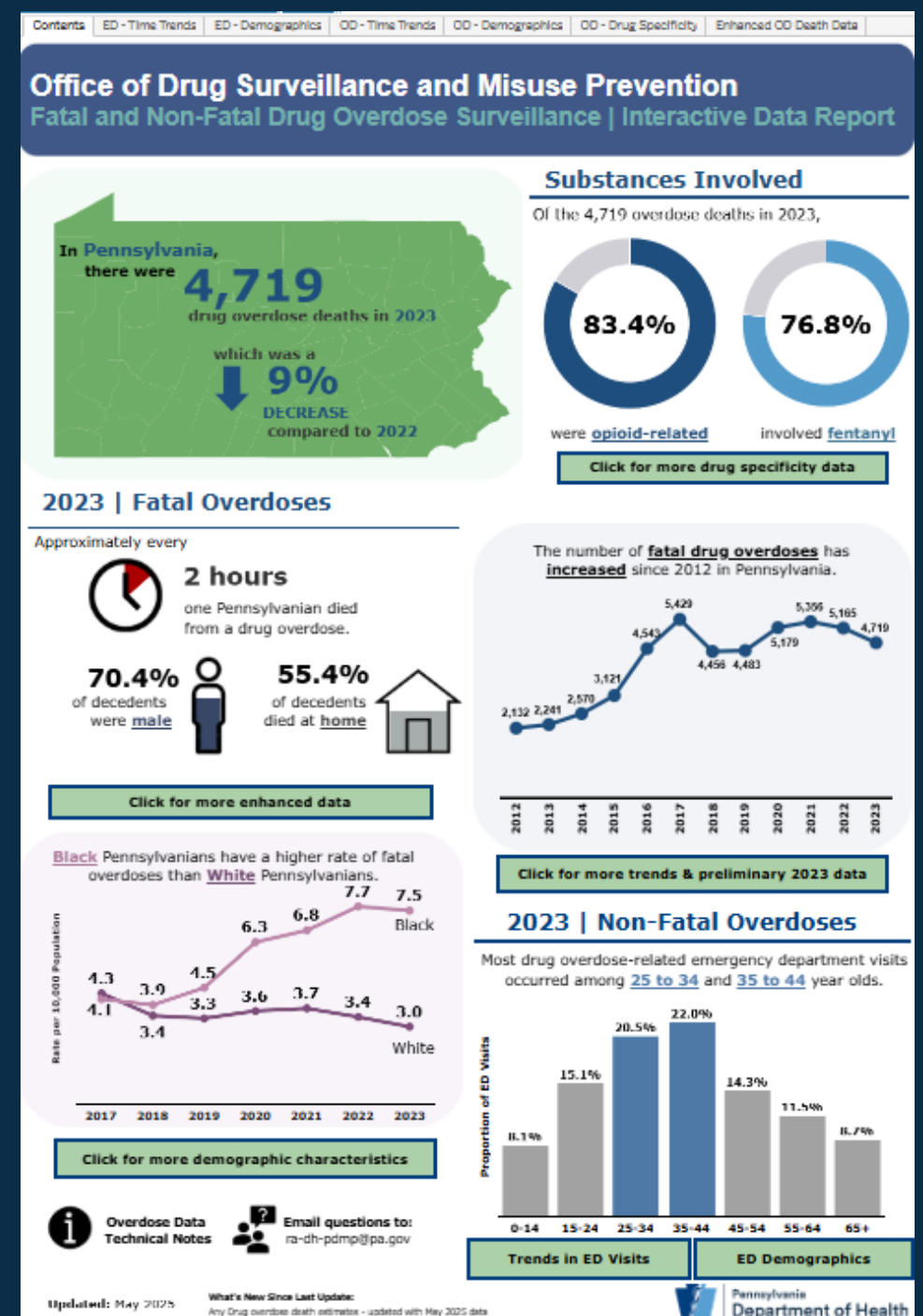
Substance	2023		2024 [‡]		2025 [‡]	
	Count	% Total Deaths	Count	% Total Deaths	Count	% Total Deaths
Carfentanil	1-5*	*	14	<1%	13	<1%
Illegal Benzodiazepines	149	3%	152	5%	27	2%
Etomidate	0	0%	0	0%	0	0%
Medetomidine	0	0%	74	2%	97	5%
Nitazenes	16	<1%	31	<1%	1-5*	*
Tianeptine	1-5*	*	1-5*	*	1-5*	*
Xylazine	1,164	25%	835	25%	217	12%

[†]Counts represent deaths where a particular substance was noted as contributing to death on the death record. If the drugs contributing to death are not listed on the death record, ODSMP considers all drugs positive on toxicology to be contributory. Please note that testing capacity for novel substances varies by lab and a zero value does not necessarily mean that a particular substance is absent from the drug supply. *Counts between 1 and 5 are suppressed.

[‡]2024/2025 death data is preliminary, based on death record data as of October 2025. Please note that death records for overdose deaths are often delayed by 3-6 months and counts may change. Counts do not include suicides or homicides where someone intended to harm another person by poisoning. As of October 2025, ~2% of 2024 overdose deaths and ~23% of 2025 overdose deaths are missing drug specificity. Previous years are missing ≤5%.



Additional data on Unintentional & Undetermined Drug Overdoses, including county-specific data, can be found on the Drug Overdose Surveillance Interactive Data Report: <https://www.pa.gov/agencies/health/healthcare-and-public-health-professionals/pdmp/data.html>



Additional resources of interest:

Publications:

[Inequities in naloxone administration among fatal overdose decedents by race and ethnicity in Pennsylvania, 2019-21 - PubMed](#)

[Controlled Substance Prescribing Patterns Among Fatal Overdose Decedents with an Opioid, Stimulant, or Both Contributing to Death — Pennsylvania, 2017–2022 | MMWR](#)

Recent Health Alerts:

Aug 2024: [Medetomidine, a Potent Non-opioid Veterinary Sedative, Has Been Detected in the Illicit Drug Supply](#)

Aug 2024: [Emerging Substances in the Illicit Drug Supply](#)

Dec 2024: [Hospitals and Behavioral Health Providers are Reporting Severe and Worsening Presentations of Withdrawal among People who Use Drugs \(PWUD\) in Philadelphia](#)

Jun 2025: [Responding to Overdose and Withdrawal Involving Medetomidine – Updated Guidance](#)

Oct 2025: [Increased Volume of Calls Related to Kratom/Mitragynine and 7-hydroxymitragynine \(7-OH\) to Pennsylvania's Poison Centers](#)



Questions?

For additional information on Unintentional &
Undetermined Drug Overdose Surveillance,
please contact:

Carrie Thomas Goetz, PhD
Senior Epidemiologist

Office of Drug Surveillance and Misuse Prevention
Department of Health
cathomasgo@pa.gov

